

PART OF N.E. 1/4, SEC. 24, T.5N., R.3W., S.L.B. & M.

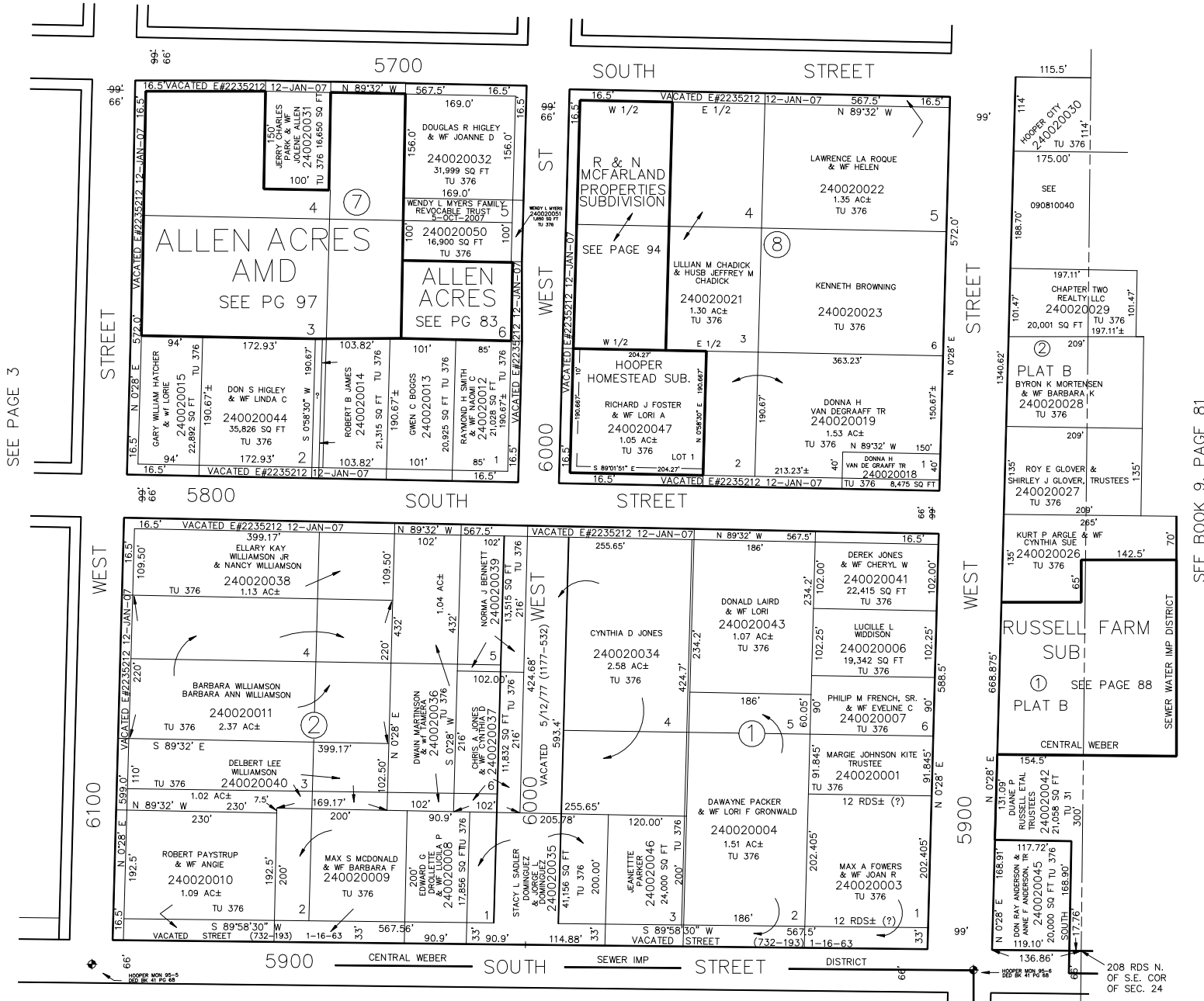
HOOPER CITY

BLOCK 1, 2, 7 & 8, PLAT "A", & LOTS 1 & 2, PLAT "B"

TAXING UNIT: 31, 376

SCALE 1" = 120'

SEE PAGE 4



SEE PAGE 3

SEE BOOK 9, PAGE 81

SEE BOOK 10, PAGE 24